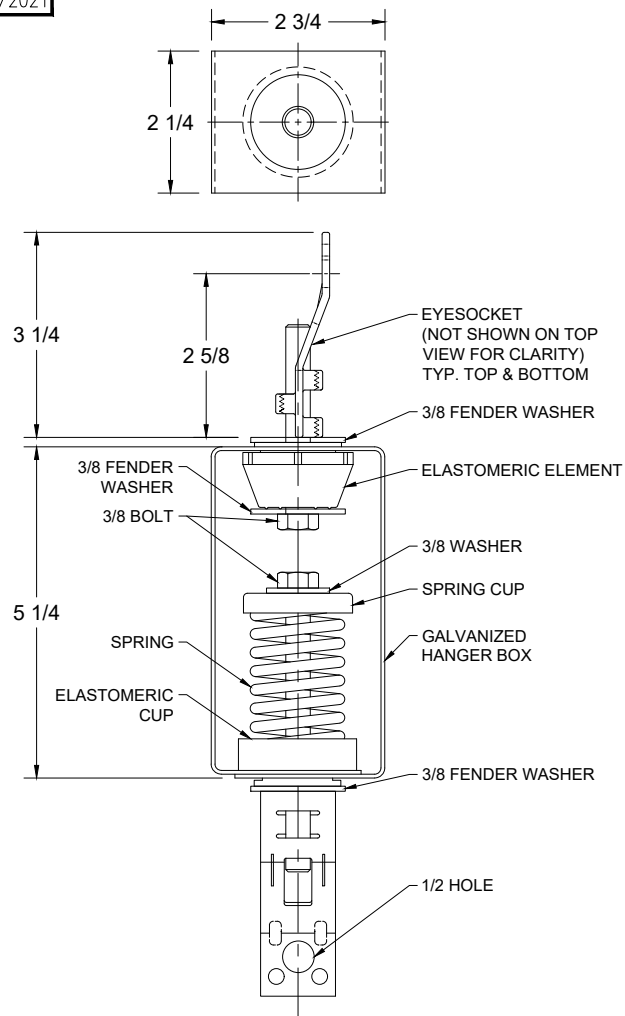


REV.	DESCRIPTION	DATE	BY



MODEL RSHSC-1B ELASTOMERIC & SPRING HANGER 1" DEFLECTION				
HANGER	RATED LOAD (LBS)	RATED DEFLECTION (IN)	SPRING RATE (LBS/IN)	COLOR CODE
RSHSC-1B-20	20	1.25	16	DK BLUE
RSHSC-1B-35	35	1.17	30	BLACK
RSHSC-1B-50	50	1.11	45	RED
RSHSC-1B-70	70	0.88	80	DK GREEN
RSHSC-1B-85	85	0.81	105	GRAY

**NOTES:**

1. STANDARD FINISH: HANGER BOX; GALVANIZED STEEL, SPRING - POWDER COAT.
2. ALL DIMENSIONS IN INCHES. INTERPRET PER ANSI Y14.
3. ALL DIMENSIONS ARE FOR REFERENCE, DIMENSIONS SHOWN AS NOMINAL.
4. ALL SPRINGS ARE DESIGNED WITH MINIMUM 20% OVER-TRAVEL.
5. HANGER BOXES WITH AN ELASTOMERIC ELEMENT HAVE UP TO AN ADDITIONAL 1/4" NOMINAL DEFLECTION.
6. SOME ASSEMBLIES MAY INCLUDE ADDITIONAL OR VARYING SIZE WASHERS.
7. RATED DEFLECTIONS ARE WITHIN 25% OF NOMINAL. HIGHER DEFLECTIONS ARE ALLOWED IF THEY MEET SPECIFICATIONS.

**ISOLATOR SELECTIONS**

LOC 1:	LOC 2:
LOC 3:	LOC 4:
LOC 5:	LOC 6:
LOC 7:	LOC 8:
CUSTOMER EQP'T. TAG:	

NOTE: MATERIAL SHOWN IS FOR (1) SET.

OTHER MATERIALS, COMPOUNDS, OR FINISHES WITH EQUAL OR SUPERIOR PROPERTIES MAY BE SUBSTITUTED AS THEY BECOME AVAILABLE.

**CERTIFIED FOR:**

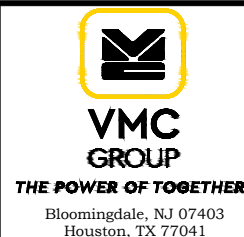
JOB NAME: \_\_\_\_\_

CUSTOMER : \_\_\_\_\_

CUSTOMER P.O.: \_\_\_\_\_

SALES ORDER: \_\_\_\_\_

**MODEL RSHSC-1B 20-85 LBS.  
ELASTOMERIC AND SPRING HANGER  
WITH EYESOCKET  
1 INCH DEFLECTION**



SCALE :

NONE

SHEET:

DRAWING NO.:

REVISION

